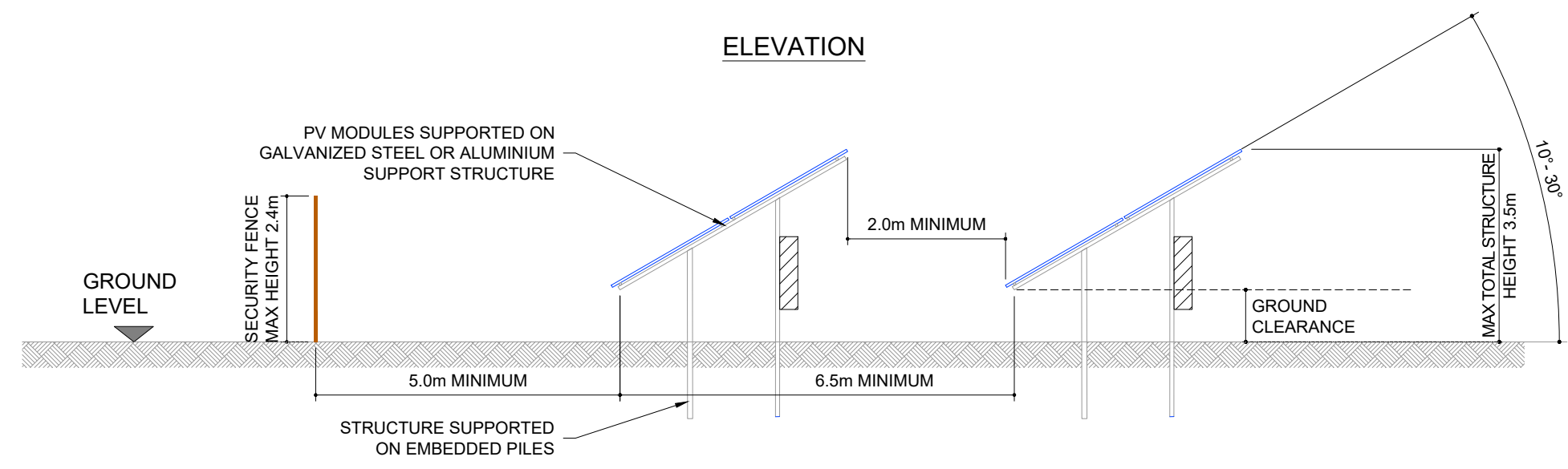


**ELEVATION**




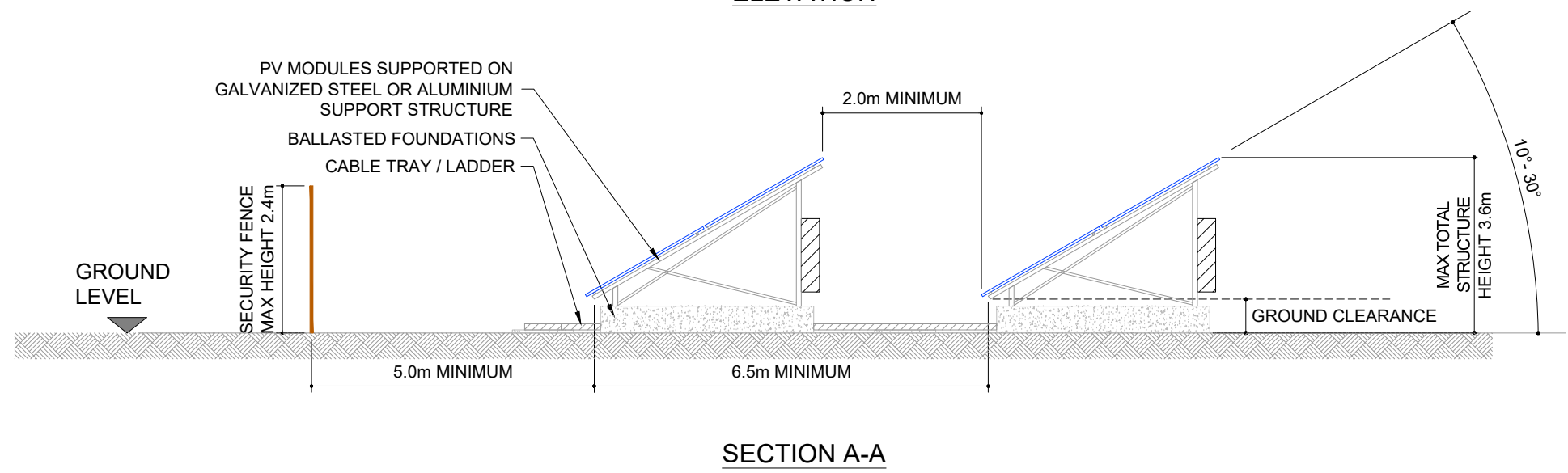
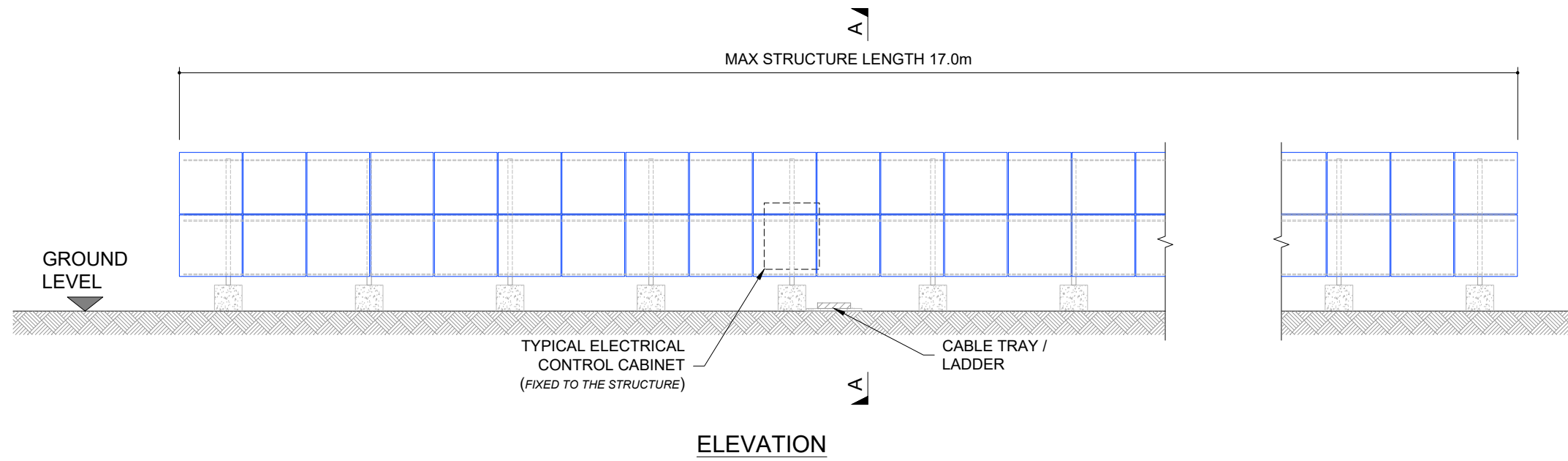
**SECTION A-A**



**NOTES**

1. ALL DIMENSIONS ARE SUBJECT TO DETAILED DESIGN.
2. GROUND CLEARANCE WILL VARY AS REQUIRED ACCORDING TO TOPOGRAPHY AND MODULE CONFIGURATION.
3. THE PILE DEPTH SHALL BE DETERMINED FOLLOWING DETAILED GEOTECHNICAL SITE INVESTIGATION AND WILL TYPICALLY BE 1.5 - 1.7m. HOWEVER THE MAXIMUM DEPTH COULD BE UPTO 2.4m.
4. PV MODULES ARE SHOWN IN ELEVATION VIEW INSTALLED IN LANDSCAPE, ALTHOUGH THEY MAY BE INSTALLED IN PORTRAIT TO SUIT SITE CONDITIONS.

1	FG	IB	ML	2023-10-13	First Issue
ISSUE	DRAWN	CHKD	APPD	DATE	REVISION NOTES
PURPOSE					COORDINATES
PERMITTING					
SCALE				1:100	DATUM
				@A3	N/A
LAYOUT DRAWING					T-LAYOUT NO
N/A					N/A
PROJECT TITLE					
BOXTED SOLAR					
DRAWING TITLE					
FIGURE 8					
TYPICAL PV MODULE AND RACK DETAILS					
RES DRAWING NUMBER					REV
04806-RES-SOL-DR-PT-001					1
THIS DRAWING IS THE PROPERTY OF RENEWABLE ENERGY SYSTEMS LIMITED AND NO REPRODUCTION MAY BE MADE IN WHOLE OR IN PART WITHOUT PERMISSION					
				BEAUFORT COURT, EGG FARM LANE, KINGS LANGLEY, HERTS WD4 8LR, UK TEL +44 (0) 1923 299200 WWW.RES-GROUP.COM	



**NOTES:**

1. ALL DIMENSIONS ARE SUBJECT TO DETAILED DESIGN.
2. GROUND CLEARANCE WILL VARY AS REQUIRED ACCORDING TO TOPOGRAPHY AND MODULE CONFIGURATION.
3. PV MODULES ARE SHOWN IN ELEVATION VIEW INSTALLED IN LANDSCAPE, ALTHOUGH THEY MAY BE INSTALLED IN PORTRAIT TO SUIT SITE CONDITIONS.
4. SUPPORT FRAME IS CONNECTED DIRECTLY TO THE BALLASTED FOUNDATION.

1	FG	IB	ML	2023-10-13	First Issue
ISSUE	DRAWN	CHKD	APPD	DATE	REVISION NOTES
PURPOSE					COORDINATES
PERMITTING					
SCALE				@A3	DATUM
1:100					N/A
LAYOUT DRAWING					T-LAYOUT NO
N/A					N/A
PROJECT TITLE					
BOXTED SOLAR					
DRAWING TITLE					
FIGURE 8					
TYPICAL PV MODULE AND RACK DETAILS					
RES DRAWING NUMBER					REV
04806-RES-SOL-DR-PT-001					1
THIS DRAWING IS THE PROPERTY OF RENEWABLE ENERGY SYSTEMS LIMITED AND NO REPRODUCTION MAY BE MADE IN WHOLE OR IN PART WITHOUT PERMISSION					
				BEAUFORT COURT, EGG FARM LANE, KINGS LANGLEY, HERTS WD4 8LR, UK TEL +44 (0) 1923 299200 WWW.RES-GROUP.COM	